



ROYAL CANIN®

Queen

Queens during heat, gestation and lactation



GESTATION & LACTATION SUPPORT

A unique nutritional profile (adapted energy content, beta-carotene and essential fatty acids) to meet the specific needs of reproductive queens from the 1st day of heat, during gestation and through to the end of lactation.



HIGHLY PALATABLE

An adapted formula to help stimulate the queen's food intake to help the queen store energy needed for future lactation.



SUPPORT FOETAL BRAIN DEVELOPMENT

DHA helps support the foetus's brain development during gestation and lactation.



AVAILABLE IN 4 AND 10 KG



L.I.P.: Selected protein with digestibility over 90% (Royal Canin).

ANALYTICAL CONSTITUENTS

Protein (%)	34
Fat content (%)	23
Crude fibres (%)	4,80
Crude ash (%)	7,70
Moisture (%)	5,50

AMINO ACIDS (TOTAL)

Taurine (%)	0,30
Arginine (%)	1,78
Lysine (%)	1,67
Methionine (%)	0,67
Met. + cystine (%)	1,15
L-Carnitine (mg/kg)	50

MINERALS (TOTAL)

Calcium (%)	1,15
Phosphorus (%)	0,95
Sodium (%)	0,50
Chloride (%)	0,85
Potassium (%)	0,70
Magnesium (%)	0,13
Copper (mg/kg)	15
Iron (mg/kg)	194
Manganese (mg/kg)	67
Zinc (mg/kg)	204
Selenium (mg/kg)	0,33
Iodine (mg/kg)	4,70

VITAMINS (TOTAL)

Vit.A (IU/kg)	29500
Vit.D3 (IU/kg)	600
Vit.E (mg/kg)	600
Vit.C (mg/kg)	290
B1 (Thiamin) (mg/kg)	10,80
B2 (Riboflavin) (mg/kg)	38,90
Calcium pantothenate (mg/kg)	59,30
B6 (Pyridoxin) (mg/kg)	64,60
B12 (Cyanocobalamin) (mg/kg)	0,11
Niacin (mg/kg)	120,40
Biotin (mg/kg)	5,41
Folic acid (mg/kg)	23,70
Choline (mg/kg)	3300
Betacarotene (mg/kg)	30

OTHER NUTRIENTS (TOTAL)

Starch (%)	18,80
Dietary fibre (%)	11
Linoleic acid (%)	5,04
Lutein (mg/kg)	5
Arachidonic acid (%)	0,12
Omega 6 (%)	5,24
Omega 3 (%)	1,14
EPA+DHA (%)	0,40

METABOLISABLE ENERGY

Energy_NRC 85 (kcal/kg)	4020
Energy_NRC 2006 (kcal/kg)	4178

INGREDIENTS

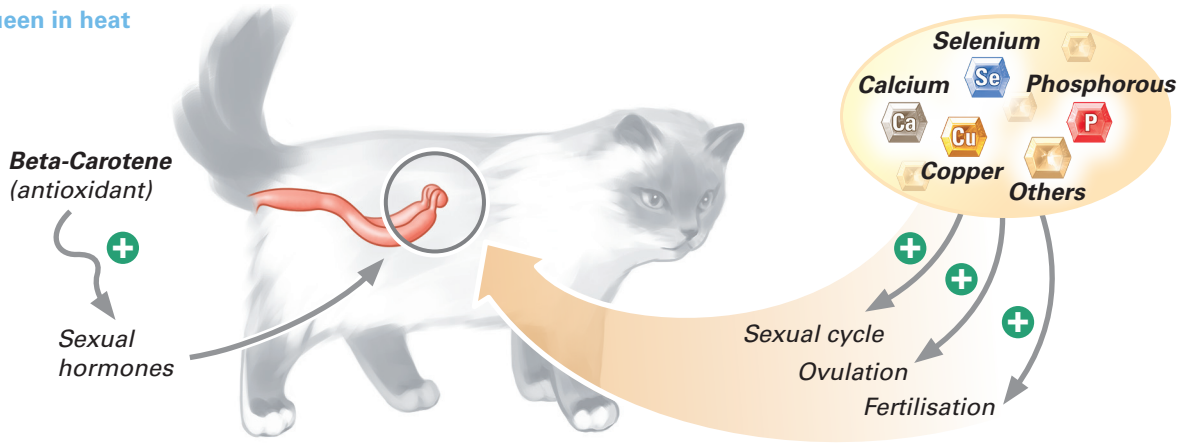
COMPOSITION: dehydrated poultry protein, animal fats, maize, vegetable protein isolate*, rice, vegetable fibres, hydrolysed animal proteins, yeasts and parts thereof, beet pulp, fish oil, soya oil, minerals, fructo-oligo-saccharides, hydrolysed yeast (source of manno-oligo-saccharides), marigold extract (source of lutein).

ADDITIVES (per kg): Nutritional additives: Vitamin A: 27000 IU, Vitamin D3: 600 IU, E1 (Iron): 42 mg, E2 (Iodine): 4.2 mg, E4 (Copper): 13 mg, E5 (Manganese): 55 mg, E6 (Zinc): 164 mg, E8 (Selenium): 0.07 mg, Beta-carotene: 30 mg - Technological additives: Clinoptilolite of sedimentary origin: 10 g - Preservatives - Antioxidants.

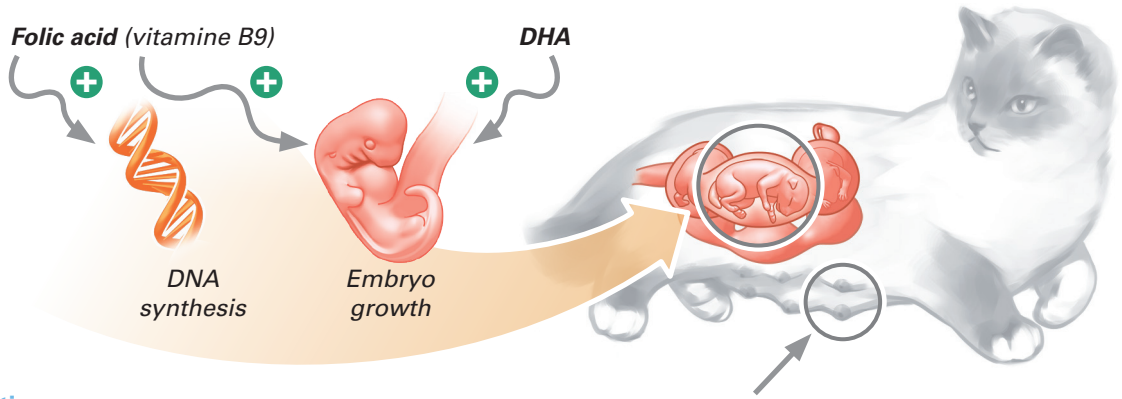
* L.I.P.: protein selected for its very high digestibility.

Reproduction

Queen in heat



Gestating queen



Lactating queen

The queen's energy needs increase dramatically during lactation. QUEEN nutritional answer provides the essential energy for good milk production (notably fats and L-carnitine), while DHA helps support the kittens' brain development.

- 24H - Recommended daily quantities

Gestating queen*	3 kg***	4 kg***	5 kg***	6 kg***
	49g - 83g 	60g - 102g 	70g - 119g 	80g - 136g
	26g - 60g + 1/2	37g - 79g + 1/2	47g - 96g + 1/2	57g - 113g + 1/2
Nursing queen** : Ad libitum	** Chatte allaitante - Säugende Mutterkatze - Zogende poes Gata lactante - Кормящая кошка			

= Kibbles only
Croquettes seules
Ausschließlich Trockenahrung
Droogvoeding
Sólo croquetas
Только сухой корм

OR - OU
ODER
OF - O
ИЛИ

+ 1/2 = Kibbles + 1/2 can "Royal Canin Babycat Instinctive"
Croquettes + 1/2 boîte "Royal Canin Babycat Instinctive"
Trockennahrung + 1/2 Dose „Royal Canin Babycat Instinctive“
Droogvoeding + 1/2 blik "Royal Canin Babycat Instinctive"
Croquetas + 1/2 lata de "Royal Canin Babycat Instinctive"
Сухой корм + 1/2 банки "Royal Canin Babycat Instinctive"

= Water - Eau
Wasser
Agua - Вода

**IT IS RECOMMENDED THAT DAILY RATION BE CONTROLLED
TO AVOID ANY RISK OF EXCESS WEIGHT GAIN WHICH COULD AFFECT THE ANIMAL'S HEALTH**